



10b Searle Street Horsham VIC



Situated in the popular tree-lined Searle Street, this central two-storey delight is within walking distance from the CBD.

Character-filled, this home features a master suite oasis with walk-in robe, ensuite and sunroom/parent's retreat to relax in. The remaining three bedrooms are contained upstairs with a walk-in robe to one, and a neat bathroom with separate shower and bath.

Keeping families in mind, there are two fantastic living rooms as well as a separate dining room. The kitchen, featuring a generously-sized walk-in pantry, looks out to the neat gardens accessible by french double doors.

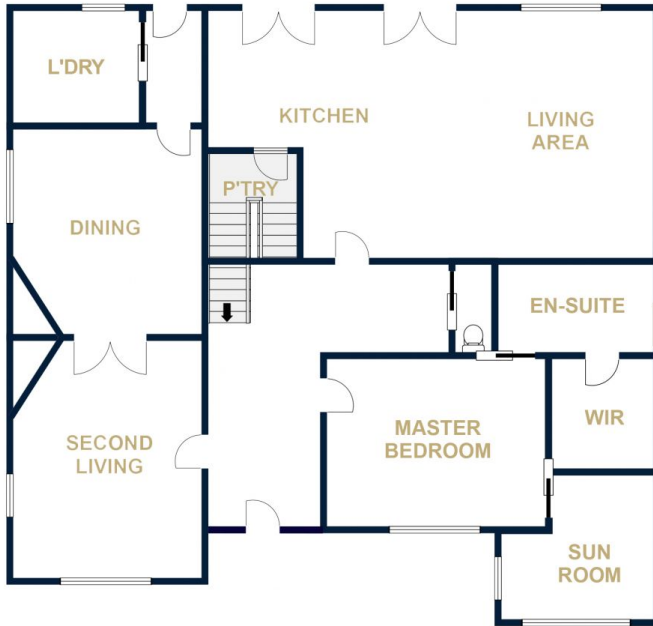
This home also features ducted heating and evaporative air-conditioning, a Jarrah decked verandah, a secure yard, a small storage shed, a tandem carport plus a garage/shed.

Price : \$ 410,000

View : <https://www.wdre.com.au/6258768>



Robert Dolan
0419440617



FIRST FLOOR



SECOND FLOOR

FLOOR PLANS/SITE PLANS ARE INTENDED AS A GENERAL GUIDE ONLY. NO REPRESENTATIONS OR WARRANTIES OF ANY NATURE WHATSOEVER ARE GIVEN OR INTENDED AND ANY PERSON USING THIS INFORMATION SHOULD ALWAYS RELY ON THEIR OWN ENQUIRIES.