



**WES DAVIDSON**  
REAL ESTATE

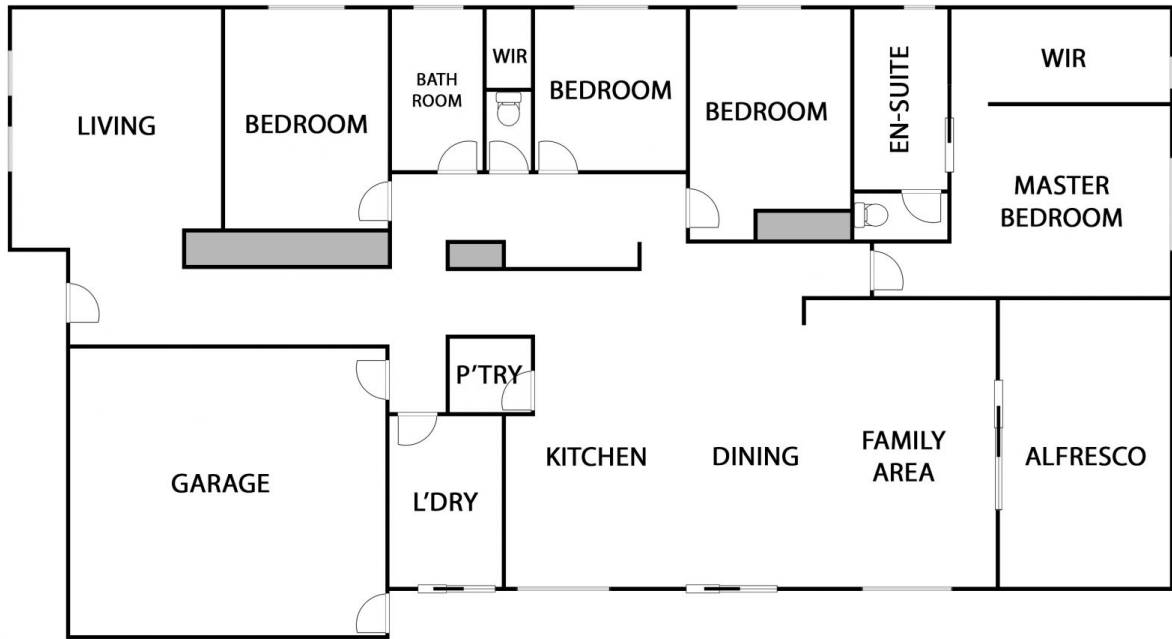


**80 McTavish Boulevard Horsham VIC**

4 2 2

Located close to the Wimmera River is this quality home in the sought after Southbank Estate. Internal features include a modern kitchen with stainless steel appliances and a walk-in pantry open to the dining and lounge area, a second living area, four bedrooms with large walk-in robe and ensuite to the master, plus ducted heating and cooling throughout. Outside is an undercover pergola area, a spacious landscaped yard and side access through to the 30'x20' (approx) lined shed with concrete floor and power. This perfectly presented home in a great location is worthy of your inspection!

**View** : <https://www.wdre.com.au/6517689>



80 McTavish Boulevard