



2/8 Latus Drive Horsham VIC

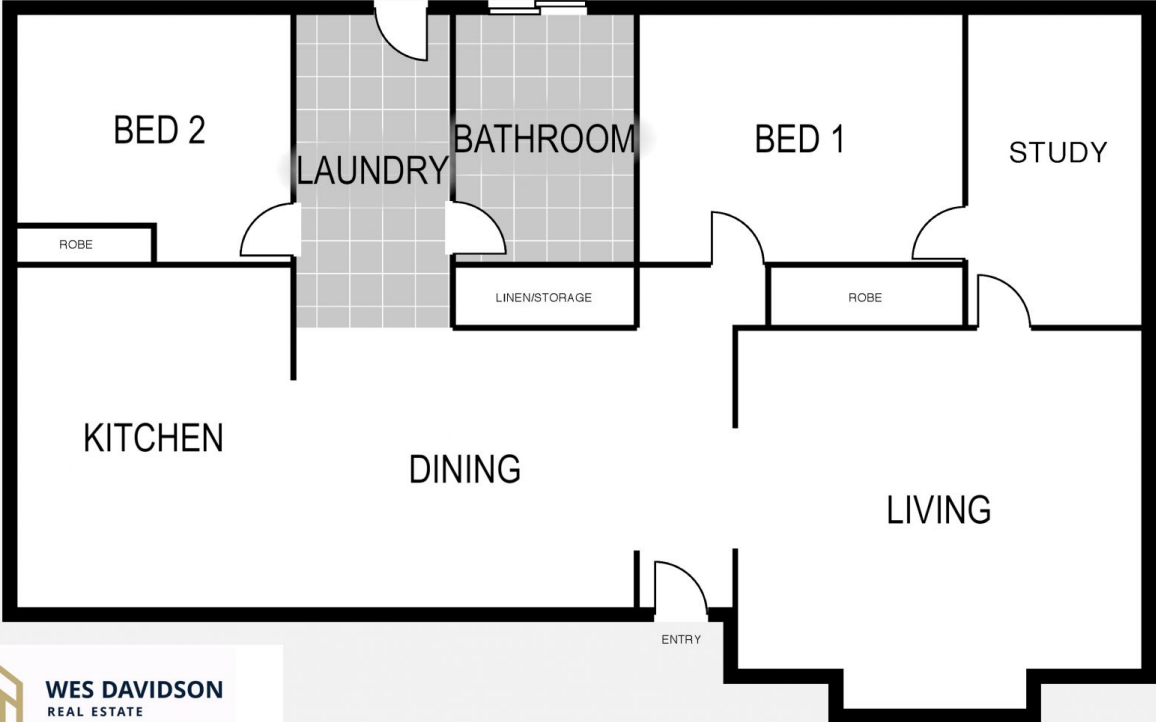
2 1 1

Whether it's to downsize or use as a perfect investment property, look no further than this low-maintenance townhouse in a quiet court location. Features include two spacious bedrooms plus a study, direct bathroom access from the master bedroom, laminex kitchen with tiled meals area, a roomy lounge, gas heating and evaporative cooling. Outside is an easily-maintained backyard and a single garage. Currently leased to excellent tenants for \$265 per week, these tenants have indicated that they are willing to stay on at the property if you wish.

View : <https://www.wdre.com.au/6517727>



Robert Dolan
0419440617



WES DAVIDSON
REAL ESTATE

Disclaimer: Floor plans/site plans are intended as a guide only. No representations or warranties of any nature whatsoever are given or intended and any person using this information should always rely on their own enquiries.