



**21 Mardon Drive Horsham VIC**



A low-maintenance lifestyle is never far away with this very neat home in a sought-after location.

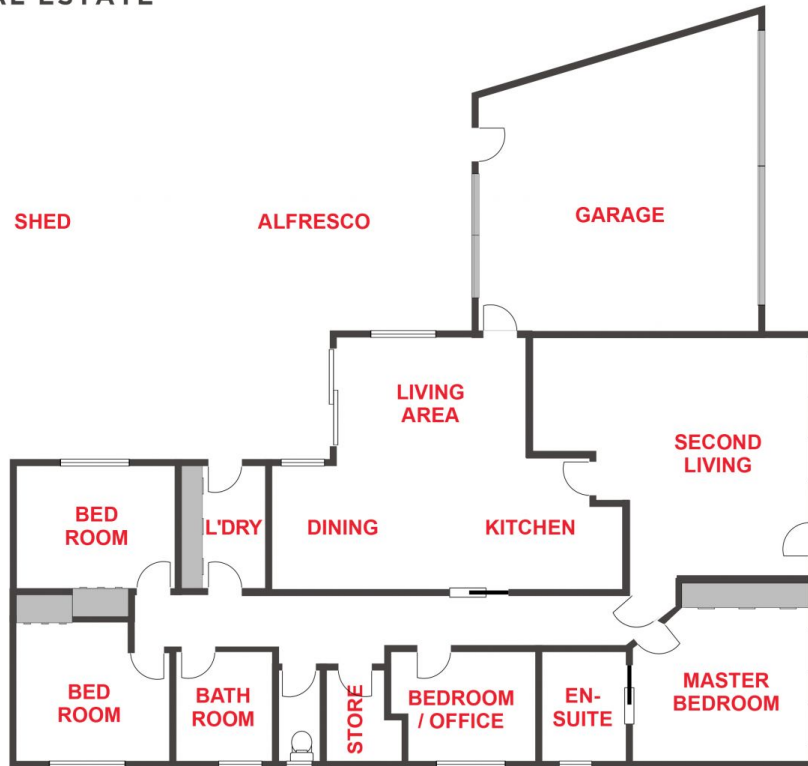
**Price** : \$ 615,000

**View** : <https://www.wdre.com.au/6559163>

- \* Prime position overlooking Burnt Creek and within a short walk to the Wimmera River
- \* Four bedrooms with the master bedroom offering great views & a roomy ensuite
- \* Two separate living areas with gas heating
- \* The double garage is higher than average, allowing easy caravan access
- \* Huge shed and low-maintenance backyard
- \* Land area: Approx. 763sqm
- \* Zoning: General Residential Zone (GRZ1)



**Robert Dolan**  
**0419440617**



FLOOR PLANS/SITE PLANS ARE INTENDED AS A GENERAL GUIDE ONLY. NO REPRESENTATIONS OR WARRANTIES OF ANY NATURE WHATSOEVER ARE GIVEN OR INTENDED AND ANY PERSON USING THIS INFORMATION SHOULD ALWAYS RELY ON THEIR OWN ENQUIRIES.