



38 Brighton Drive Doon VIC

3 2 2

Enjoy a more peaceful lifestyle only minutes from the Horsham CBD. This property offers plenty of room for the family to relax and enjoy everything it has to offer.

- * Timber kitchen with good sized pantry and beautiful views of the backyard
- * Two spacious living areas
- * Walk-in robe and ensuite to the master bedroom and built-in robes to the remaining
- * Large study with plenty of storage and direct access from the double garage
- * Huge undercover entertaining area and fully-fenced grassed yard
- * Two large powered sheds, one with a cement floor
- * Evaporative cooling, gas log fire, split systems & ceiling fans for year-round comfort
- * Land size: Approx. 3.28 hectares (Approx. 8.10 acres) (Source: Pricerfinder)

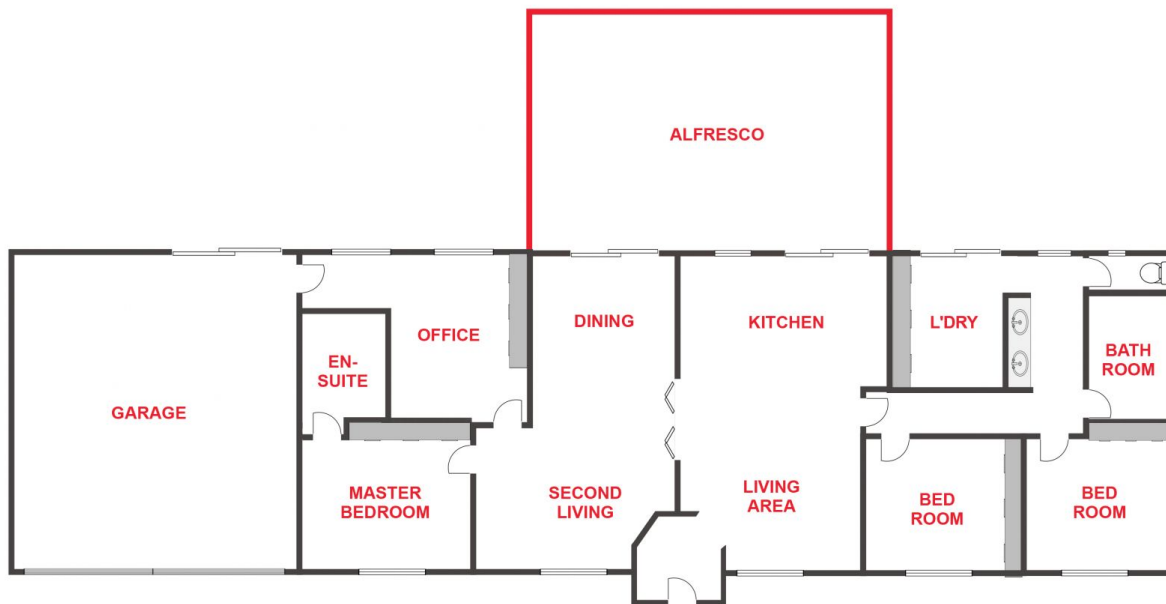
Price : \$ 692,500
Land Size : 3.28 ha
View : <https://www.wdre.com.au/6686920>



Robert Dolan
0419440617



Ethan Miller
0427719353



FLOOR PLANS/SITE PLANS ARE INTENDED AS A GENERAL GUIDE ONLY. NO REPRESENTATIONS OR WARRANTIES OF ANY NATURE WHATSOEVER ARE GIVEN OR INTENDED AND ANY PERSON USING THIS INFORMATION SHOULD ALWAYS RELY ON THEIR OWN ENQUIRIES.