



27 Mardon Drive Horsham VIC

3 2 2

Located in a peaceful street close to the Wimmera River, this home offers many exciting opportunities.

- * Open-plan kitchen, living and dining zone creating a lively hub of the home
- * Spacious and light-filled master with a walk-in-robe and en-suite
- * Three good-sized bedrooms all fitted with built-in-robos
- * Comfort in mind this home also includes ducted heating and cooling
- * Outside features a fantastic blank canvas, with a paved entertainment area, shed and garden shed
- * Land size: Approx. 755 sqm (source: PriceFinder)
- * Zoning: General Residential Zone (GRZ1)

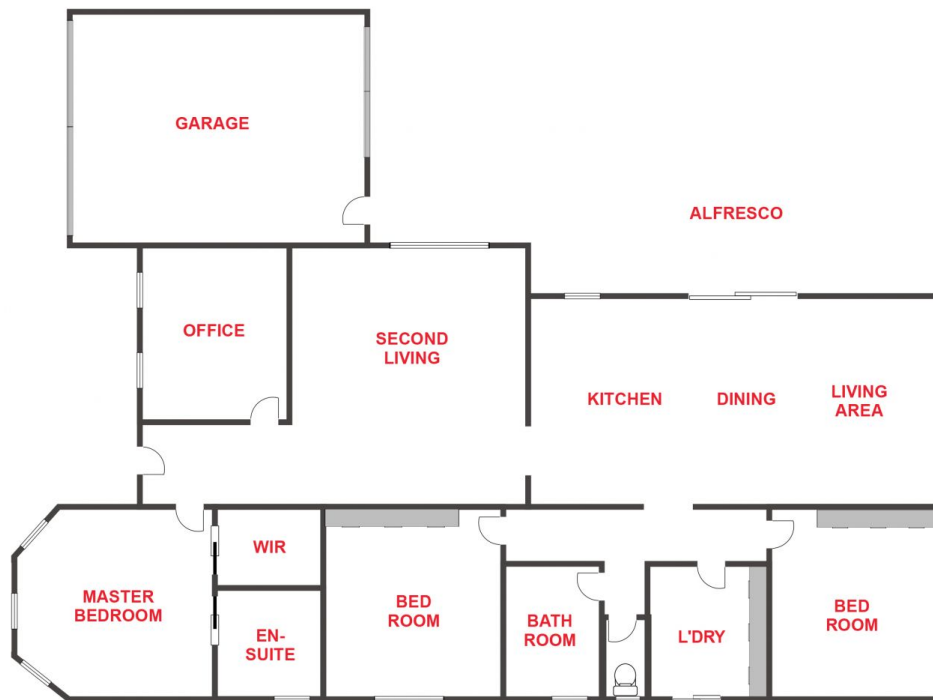
Price : \$ 512,500

Land Size : 755 sqm

View : <https://www.wdre.com.au/6689591>



Wes Davidson
0419820000



FLOOR PLANS/SITE PLANS ARE INTENDED AS A GENERAL GUIDE ONLY. NO REPRESENTATIONS OR WARRANTIES OF ANY NATURE WHATSOEVER ARE GIVEN OR INTENDED AND ANY PERSON USING THIS INFORMATION SHOULD ALWAYS RELY ON THEIR OWN ENQUIRIES.