



1 MacBain Street Horsham VIC

3 1 2

Centrally located on a large block close to the Wimmera River is this beautifully renovated weatherboard home. If you are looking for some space this is the one for you.

Price : \$ 400,000
Land Size : 1250 sqm
View : <https://www.wdre.com.au/6814146>

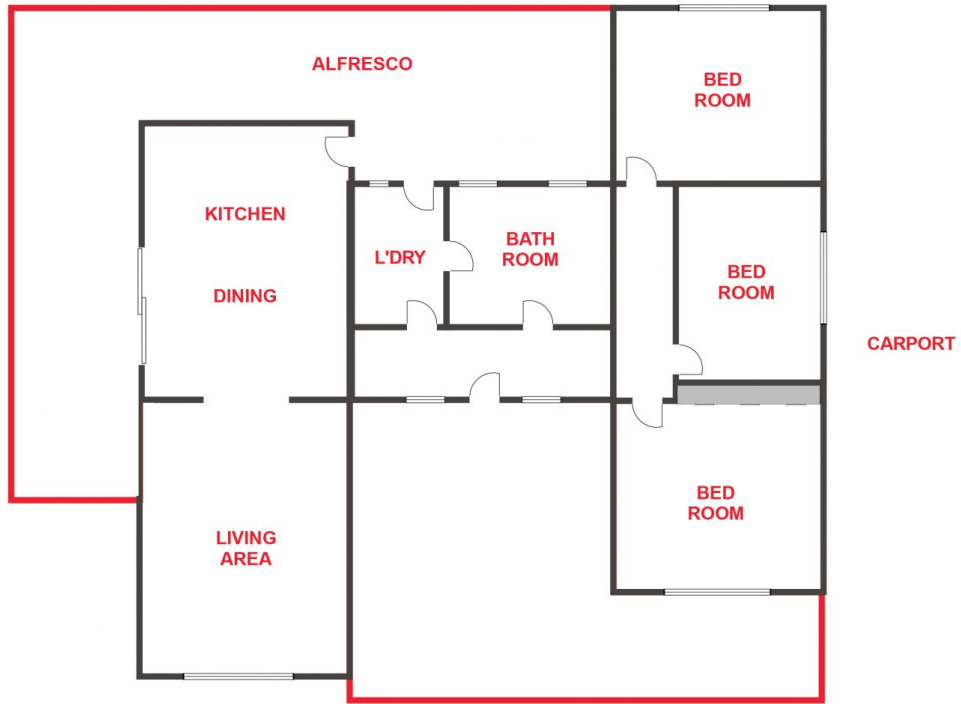
- * Three bedrooms, Master with built in robes
- * Central family bathroom
- * Spacious open plan kitchen and dining
- * Family room with gas log fire and evaporative cooling throughout
- * Large decked outdoor entertaining area overlooking the enclosed back yard
- * Two car carport plus single garage
- * Separate side yard with great access to the large handyman shed. This area is currently set up as a bowling green with a bar area but the opportunities for this area are endless.
- * Land size: Approx. 1,250 sqm (Source: Pricerfinder)
- * General Residential Zoning (GRZ1)



Robert Dolan
0419440617



Kristyn Dolan
0429837148



FLOOR PLANS/SITE PLANS ARE INTENDED AS A GENERAL GUIDE ONLY. NO REPRESENTATIONS OR WARRANTIES OF ANY NATURE WHATSOEVER ARE GIVEN OR INTENDED AND ANY PERSON USING THIS INFORMATION SHOULD ALWAYS RELY ON THEIR OWN ENQUIRIES.