

5 McLean Drive Horsham VIC

4 2 2

Beautiful family home offering plenty of space for the growing family in the sort after south bank area.

- * Large kitchen with loads of bench space and butlers pantry
- * Three light-filled living areas
- * Four bedrooms with built-in robes. Walk-in robe and ensuite to the master
- * Centrally located study
- * Evaporative cooling and ducted heating
- * Outdoor entertaining area perfect for entertaining friends
- * Secure backyard with side access to the large workshop
- * Land Size: Approx. 864sqm (Source: Pricerfinder)
- * Zoning: General Residential Zoning (GRZ1)

Price : \$ 770,000

Land Size : 864 sqm

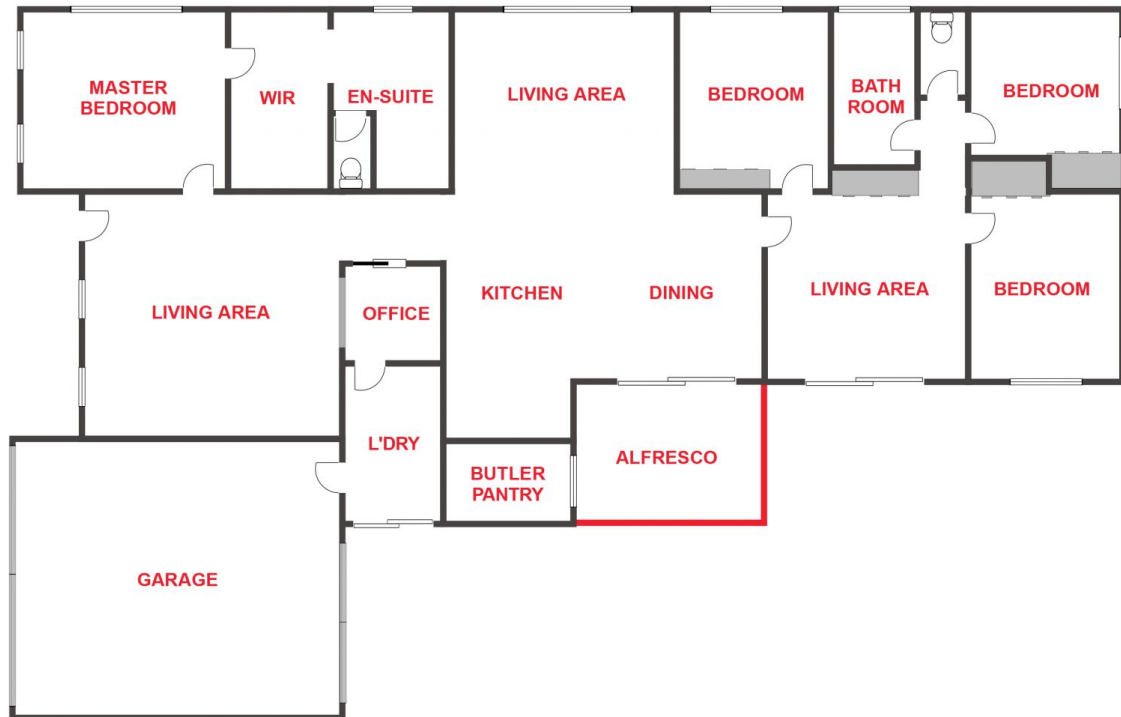
View : <https://www.wdre.com.au/6837629>



Robert Dolan
0419440617



Kristyn Dolan
0429837148



FLOOR PLANS/SITE PLANS ARE INTENDED AS A GENERAL GUIDE ONLY. NO REPRESENTATIONS OR WARRANTIES OF ANY NATURE WHATSOEVER ARE GIVEN OR INTENDED AND ANY PERSON USING THIS INFORMATION SHOULD ALWAYS RELY ON THEIR OWN ENQUIRIES.