



18 Searle Street Horsham VIC

3 1 2

This ideally located, family home is perfect for the first home buyer looking for a property they can put their own touch on.

- * Original open plan kitchen overlooking a dining/living room
- * Second light filled living area overlooking the street and with access directly to the kitchen
- * Three bedrooms serviced by a tidy family bathroom
- * Undercover, paved patio area to the left of the house with plenty of privacy
- * Situated on a large block with side access to a double garage, paved driveway, and a spacious backyard
- * Land size: Approx. 985sqm (source: PriceFinder)
- * Zoning: General Residential Zoning (GRZ1)

Price : \$ 375,000

Land Size : 985 sqm

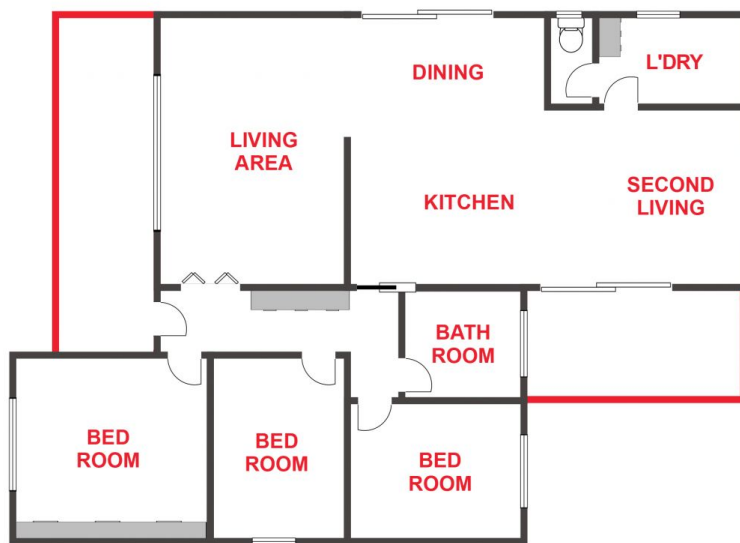
View : <https://www.wdre.com.au/6855770>



Robert Dolan
0419440617



Ethan Miller
0427719353



FLOOR PLANS/SITE PLANS ARE INTENDED AS A GENERAL GUIDE ONLY. NO REPRESENTATIONS OR WARRANTIES OF ANY NATURE WHATSOEVER ARE GIVEN OR INTENDED AND ANY PERSON USING THIS INFORMATION SHOULD ALWAYS RELY ON THEIR OWN ENQUIRIES.