



12 Fechler Avenue Horsham VIC

3  2  2 

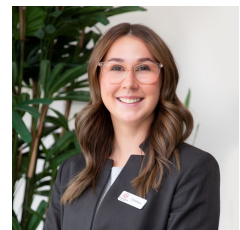
Situated in Horsham West is this updated family home on a very generous block of land that may be suitable for dual occupancy (STCA).

Land Size : 999 sqm
View : <https://www.wdre.com.au/6917776>

- * Modern kitchen boasting ample storage with meals area adjacent
- * Separate generously-sized lounge area
- * Three neat bedrooms, two with built-in robes
- * Ensuite servicing the master bedroom
- * Manageable family bathroom that has been updated
- * Large double carport and a shed
- * Plenty of space in the yard
- * Land size: Approx. 999 sqm (Source: Pricerfinder)
- * Zoning: General Residential Zoning (GRZ1)



Wes Davidson
0419820000



Chelsea Skewes
0448913072

Investors please note that minimum rental standards now apply in