



2/13 Finlayson Court Horsham VIC

2 1 1

This two-bedroom unit is only a stone's throw from the Wimmera River and with a low-maintenance yard, it is ideal for retirees, downsizers, or first-home buyers.

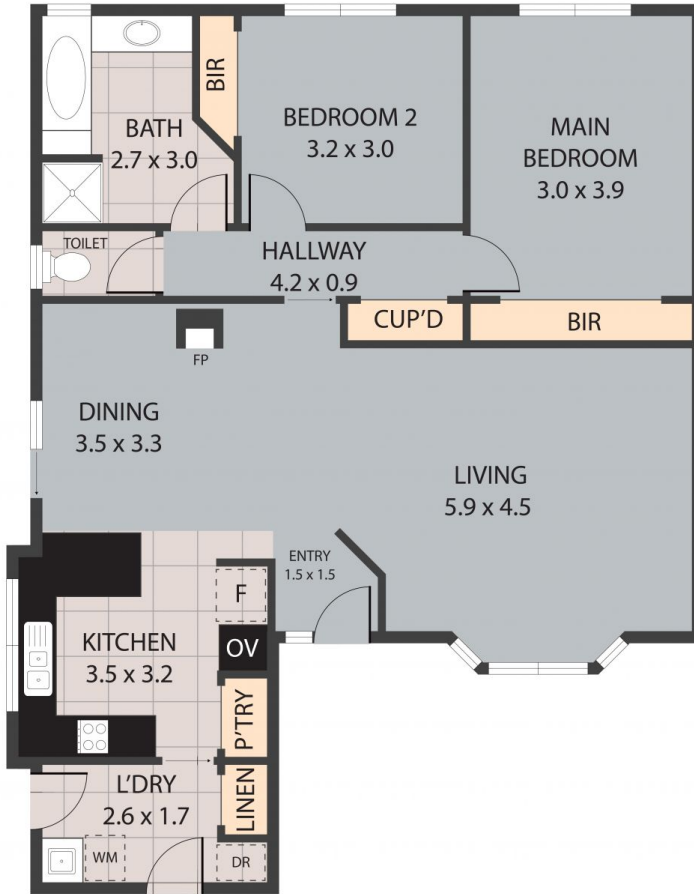
Price : \$399,000

View : <https://www.wdre.com.au/8119266>

- * Open-plan kitchen and dining area with a breakfast bench and large pantry
- * The living room features a large bay window that allows all the natural light to fill the space
- * Two bedrooms with built-in robes
- * Neat family bathroom with a separate toilet
- * Gas log fire and evaporative cooling for year-round comfort
- * Outside is a paved entertaining area and low-maintenance gardens and yard surrounding the unit
- * The unit also features great side access for caravan or boat parking
- * Single-car garage with direct access inside through the laundry
- * Land size: Approx. 404 sqm (source: PriceFinder)
- * Zoning: General Residential Zone (GRZ1)



Wes Davidson
0419820000



UNIT 2/13 FINLAYSON COURT, HORSHAM 3400

TOTAL APPROX. FLOOR AREA 85 SQ.M

Whilst every attempt has been made to ensure the accuracy of the floor plan contained here, measurements of doors, windows, rooms and any other items are approximate and no responsibility is taken for any error, omission, or misstatement. This plan is for illustrative purposes only and should be used as such by any prospective purchaser.